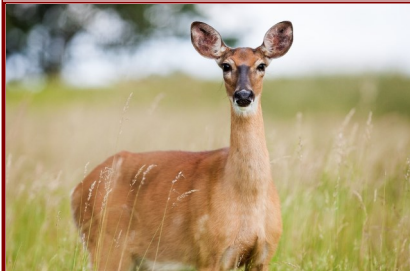


## Feathers, Furs, and Farming – Deer – September 29th



Texas A&M AgriLife Extension Service of Austin and Colorado Counties are partnering with the Texas Parks and Wildlife Department to host a Feathers, Furs, and Farming series on Friday, September 29, 2023. As part of the range and wildlife management series, this program will focus on white-tailed deer. Topics covered will include updates on Chronic Wasting Disease (CWD), habitat management, supplemental feeding, doe harvesting, learning to age deer on the hoof, and basic antler scoring. We will also have some fun with an aging quiz, so sharpen those skills!

If you are seeking TDA hours for your applicator license, there will be 1 General CEU available to pesticide applicators who attend. The event will be held at the Immaculate Conception German Catholic Church located at 1599 TX-159, Industry, TX 78944. Registration is from 1:00—1:30 pm and the program begins at 1:30 pm until 5:00 pm. Cost of attendance is \$15 per person or \$20 per couple.

If you have any questions, please call the Austin County Extension Office at 979-865-2072, the Colorado County Extension Office at 979-732-2082, TPWD Wildlife Biologist for Colorado County at 979-732-3458, or TPWD Wildlife Biologist for Austin County at 832-595-8999.

## AUSTIN COUNTY HOG BOUNTY

The Austin County Feral Hog Bounty is still going on! The Bounty program is offered with the support of the Austin County Commissioners Court. Participants will be awarded \$5 per feral hog harvested in Austin County, with biological evidence provided of harvest in the form of a pair of feral hog ears. Each pair must be placed in an individually sealed bag and dropped off at 1 of the 3 drop off locations. Three local feed stores in the county - Steinhäuser's in Sealy, Linseisen's Feed & Supply in Bellville, and Lindemann Store in Industry - will serve as the drop off locations.

A limit of 20 pairs per household per month is allowed. All feral hogs must be harvested in Austin County & signed paperwork must be completed when dropping off the ears to collect the bounty.

*See Flier on Page 14*

### Mark Your Calendars for Upcoming Events

- September 29th: Feathers, Furs, Farming – Deer — Immaculate Conception German Catholic Church-Parish Hall, Industry, 1:00 pm (1 CEU)
- October 2nd-6th: Early Wine Show Entries can be delivered to Extension Office
- October 3rd: Homeowner Maintenance of Aerobic Treatment Units: Certification, Kenney Hall, 8:30 am
- October 6th: Fall Forage Program — American Legion Hall @ Austin County Fair Grounds, Bellville, 8 am
- **October 9th-16th: Austin County Extension Office — CLOSED for Austin County Fair (Our Support Staff will also be out of office at the Fair.)**
- October 15th: Wine Show — American Legion Hall – Austin County Fair Grounds, Bellville, 10 am
- October 17th: Lunch-n-Learn Series – Bees — Austin County Extension Office, Bellville, 11:50 am
- October 20th: New Landowner-Wildlife Mgmt. & Native Prairie Restoration—Colorado County, 1:00 pm
- November 1st –27th: Collection of Pecans for the Pecan Show
- November 1st-22nd: Collection of Soil Samples for Pasture Soil Campaign
- November 3rd: Private Applicator Training — Austin County Extension Office, Bellville, 1:00 pm
- November 17th: New Landowner – Emerging Issues — Washington County, 1:00 pm
- November 30th: Pecan Program/Awards — Austin County Extension Office, Bellville, 6:00 pm

## 15th Annual Texas State-Wide Non-Commercial Wine Competition

It's that time of year in Texas for county fairs, rodeos, parades, and ag competitions, and the Austin County Fair has one contest that you will not find at any other county fair in Texas. And no matter where you live in Texas, you can participate in it! Produced and coordinated by the Gulf Coast Winegrowers Association, the 15th Annual Texas State-Wide Non-Commercial Wine Competition will close out the Austin County Fair on October 15th at the Fairgrounds in Bellville, TX. This wine show is the only **non-commercial** wine competition presented by a county fair in Texas that is open to wine entries from non-commercial wine makers living anywhere in Texas.



Regardless of which Texas county you live in, this is your chance to have your own personal wine evaluated in blind tastings by a distinguished panel of 10 judges representing educators in the fields of Enology and Viticulture, commercial grape growers and winemakers, members of the media, and industry related individuals.

Winning wines in eight categories will be awarded Gold, Silver, and Bronze medals. Better yet, three traditional Austin County Fair Belt Buckles will also be awarded to the Overall Grand Champion (giving you bragging rights for the entire state), Reserve Grand Champion (also selected from all entries), and the Austin County Grand Champion (awarded to the best Austin County wine).

The Texas wine industry is growing in stature and size by leaps and bounds, and our commercial grape growers and wine makers are being recognized around the world. Whether you are interested in starting down that path or just want to showcase your skills as a home winemaker, this is your chance to earn some serious Texas bragging rights.

The Wine Show will be held in the American Legion Hall (988 E. Main, Bellville, TX) on the Austin County Fairgrounds. Judging (closed to the public) begins at 1:00 pm with the hall opening to the public after the judging (approximately 3:30-5:00 pm) for the presentation of awards, winemakers meet & greet, and free tastings of all entered wines. Parking and admission to the Fair and Wine Show is free on that day. Winners do not need to be present to receive awards.

Early entry and day-of-show registration and submission of wines is available. For a complete set of rules, entry form, registration, and wine submittal dates and locations, visit the Austin County Fair website at <https://austincountyfair.com/wine-show>

*See Flier on page 7*

## PECAN SHOW & AWARDS

There will be an Annual Pecan Show on Thursday, November 30, 2023, at the Texas A&M AgriLife Extension Office located at 800 E Wendt St, Bellville, TX 77418. A short educational program will start at 6pm followed by an awards presentation. This year's Pecan Program will feature Dr. Monte Nesbitt, AgriLife Extension Horticulture Program Specialist. Dr. Nesbitt will be discussing the following topics: Processing Pecans-Field to Plate and Storage of Pecans. The educational and award program is open and free to the public, even if you did not enter pecans into the show.

Entries for show must be delivered to the AgriLife Extension Office during normal business hours, 8:00 am to (Noon) and 1:00 pm to 5:00 pm, beginning Wednesday, November 1st until Monday, November 27th. All entries must be submitted by 4:00 pm on Monday, November 27th to be entered in the show.

Each entry must be in a brown paper bag (provided at the office) with a completed entry card. Individuals may make as many entries as they wish of different pecan varieties, and each entry must consist of 50 pecans of the same variety. There is no fee to enter or age limit. Entries will be accepted from residents of Austin County or a surrounding county that does not have a county pecan show.

Ten (10) pecans will be randomly selected by the committee for judging. Included in the judging will be kernel weight percent, color, fill, and blemishes. Top placing pecans from all entries that qualify will be forwarded on for judging at the regional pecan show and from there, to the state contest held in July. Pecans not being forwarded to the regional show may be picked up at the AgriLife Extension Office on Thursday, November 30th after the awards presentation.

For the Educational and Awards Program, we do encourage you to RSVP since we will be providing dinner. Please RSVP by Tuesday, November 28th.

*See Fliers on Page 12 & 13*

## Multi-County New Landowners Series 2023

The Multi-County New Landowner Education program is a series of eight informational meetings/seminars/field days designed to make new landowners in Austin, Colorado, Fayette, & Washington Counties aware of what types of agricultural enterprises are best for their property. Participants in the program will hear from experts in various fields of agriculture concerning the best management practices that they can implement on their own property. This innovative program assists new landowners in understanding the concepts of rural living. Participants in the program are given exposure to ideas on raising livestock and horses, plant identification, fence building, applying pesticides, soil testing, stock pond management, pond construction, fruit and nut production, and much more. The program also serves as a way for new residents of the four counties to network and meet new people in their communities, find out what can be done on their land, what operations can be profitable, and possibly what opportunities they have to serve the community.

Programs remaining will be held on the third Friday of the months of September through November. Each month's meeting will be held at a different location in one of the four participating counties. The meetings will begin at 1:30 pm with registration and last until 5 pm. The cost for the program is \$20.00 per person per meeting. Continuing Education Units (CEUs) for pesticide applicators will be offered as they are applicable. A great selection of refreshments will be provided at each session. The remaining programs for 2023 are:

- **October 20th** – Wildlife Management and Native Prairie Restoration
- **November 17th** – Emerging Issues

*See Flier on Page 9*

## HOMEOWNER MAINTENANCE OF AEROBIC TREATMENTS UNITS

The Mill Creek Watershed Partnership will host a Homeowner Maintenance of Aerobic Treatment Units course from 8:30 a.m. to 4:00 p.m. on October 3rd at the Kenny Hall, 444 Hall Rd in Bellville. Normally, this course costs \$150, but due to the Mill Creek Watershed Partnership, we are offering it for FREE. This course will certify homeowners to service their own systems in Austin and Washington Counties.

The class will provide a comprehensive understanding of the operation and maintenance of aerobic systems, as well as the reporting requirements for these systems. Topics covered include treatment processes, health and safety considerations, and the impact of household activities on these systems.

We are offering this course specifically for landowners in the Mill Creek Watershed. If you're not sure whether you're in the watershed or not, you can check on this map: [https://www.google.com/maps/d/u/1/edit?mid=18Q4LgZbktQJtIsN-dvOK1q7N1YN\\_BJM&usp=sharing](https://www.google.com/maps/d/u/1/edit?mid=18Q4LgZbktQJtIsN-dvOK1q7N1YN_BJM&usp=sharing).

Registration and details can be found on the attached flier and at [tx.ag/v3fYTtz](https://tx.ag/v3fYTtz). Registration is required and will close on **Friday, Sept 29!**

*See Flier on page 5*

## Lunch-N-Learn Series 2023

Bluebonnet Master Gardeners of Austin County are pleased to present the 2023 "Lunch-N-Learn" series hosted on the third Tuesday our last one of the year will be on Tuesday, October 17th - Wonderful World of the Honeybee. The overall series features topics related to horticulture with homeowner and backyard gardeners in mind! Speakers are experts in their fields and practical gardeners with great tips and information for everyone.

Programs will be held at the Texas A&M AgriLife Extension Office of Austin County located at 800 E Wendt Street in Bellville. Program registration will begin at 11:50 am with the program beginning promptly at 12:00 pm and concluding by 12:55 pm. At the conclusion of each session, the speaker and our Austin County Master Gardeners will be available to help answer gardening questions.

All Master Gardener Lunch-N-Learn programs are FREE and OPEN to the public and you are welcome to bring your own lunch and drink. We will have a few refreshments available as well. Registration is not required but is encouraged.

*See Flier on Page 4*





This Month:  
All About  
Deer!

# FEATHERS, FURS, AND FARMING

A series of educational events designed to help all landowners diversify their operations and save more money and time by becoming better stewards of the land.

**September 29, 2023**

**Registration 1:00pm-  
1:30pm**

**Program 1:30-5:00pm**

**\$15/Person**

**\$20/Couple**

**Immaculate Conception  
German Catholic Church**

15994 TX-159  
Industry, TX 78944

**Laramie Kettler**  
979-732-2082  
Colorado County

**Stacie Villarreal**  
979-865-2072  
Austin County

**Mark Lange**  
979-732-3458  
Colorado County

**Jon McLeod**  
832-595-8999  
Austin/Ft. Bend County

## TOPICS

1 CEU - General

Update on Chronic Wasting Disease (CWD)

Habitat Management

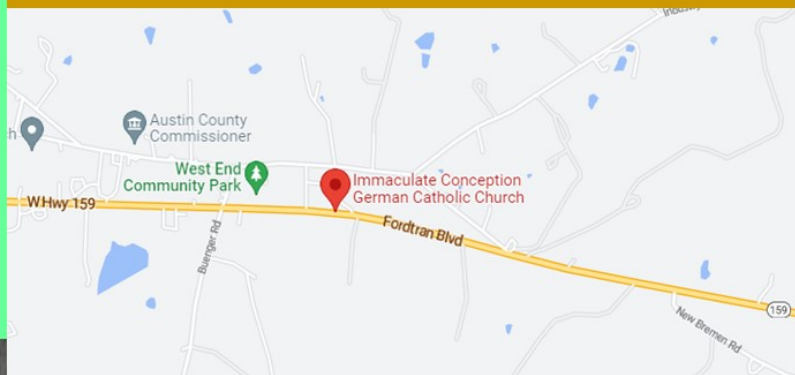
Supplemental Feeding

Doe Harvest

Aging Deer on the Hoof

Basics of Scoring a Buck

*\*Aging Quiz\**



*Educational programs of the Texas A&M AgriLife Extension Service are open to all people without regard to race, color, religion, sex, national origin, age, disability, genetic information or veteran status.  
The Texas A&M University System, U.S. Department of Agriculture, and the County Commissioners Courts of Texas Cooperating*





MILL CREEK WATERSHED PARTNERSHIP

## Homeowner Maintenance of Aerobic Treatment Units: Certification

October 3, 2023

8:30 am - 4 pm

Kenney Hall, 444 Hall Rd Bellville, TX 77418

**PREREGISTRATION IS REQUIRED AND SEATING IS LIMITED!**  
Visit [tx.ag/v3fYTtz](https://tx.ag/v3fYTtz) or call (979)865-2072 to complete registration and for more details

Do you live in the Mill Creek Watershed? This **free class** will provide you with everything you need to know to **service your own aerobic treatment system**.

- Upon completion of the class, you will receive a certificate that will qualify you, in Austin and Washington Counties, to service your own aerobic treatment system
- Lunch is on your own during an hour break
- Please be prepared to stay until 4:15, due to the anticipated large class size
- Due to our funding sources, individuals who live in the Mill Creek Watershed will receive priority in registration
- Registration deadline: **Friday, September 29 at noon**

TEXAS STATE  
**Soil & Water**  
CONSERVATION BOARD

Funding for this effort is provided through a federal Clean Water Act 319(h) Nonpoint Source Grant administered by the Texas State Soil and Water Conservation Board from the U.S. Environmental Protection Agency.





# 2023 Austin County Fall Forage Seminar & Hay Show

*Sponsored by: The Austin County Beef & Forage Committee*

**Austin County Fairgrounds**  
**Friday, October 6, 2023**

**Registration: 8:30am**

**Program: 9:00am - 12:00pm**

**Cost: \$30 per person (lunch included)**

## Topics/Speakers

- **What Does The Terminology on The Label Mean**
  - Greg Baker, Matagorda Ag & Natural Resources Agent
- **What is This & How Do I Get Rid of It**
  - Stacy Hines, PhD, Assistant Professor & Extension Rangeland Habitat Management Specialist
- **What to Feed Your Pasture & What Will it Cost**
  - Tony Provin, PhD, Texas A&M AgriLife Extension, Soil & Crop Sciences

***Hay Show results will be available after Seminar***

**Please RSVP by October 3rd**

For more information please visit the Austin County Extension Office website: [austin.agrilife.org](http://austin.agrilife.org) or contact the office, 979-865-2072





# Texas State-Wide Non-Commercial Wine Competition at the Austin County Fair

SUNDAY, OCTOBER 15, 2023  
AUSTIN COUNTY FAIRGROUNDS  
AMERICAN LEGION HALL, 988 E. MAIN, BELLVILLE TX

Produced & Coordinated by the Gulf Coast Winegrowers Association

## DROP OFF/SHIPPING LOCATIONS

### Early Entries

\*Earlier entries may be submitted upon notification

October 2nd-6th

(9am-12pm & 1pm-4pm)

- AgriLife Extension Office-Austin County
  - 800 E. Wendt St., Bellville, TX 77418
- Darst Ranch Vineyard
  - 981 Travis Rd., Bellville, TX 77418

\*Entries may be shipped to the above locations

### Drop Off Day of Show

October 15th

(10:00am-12:15pm)

- American Legion Hall (Fairgrounds)
  - 988 E Main, Bellville, TX 77418

## PRIZES

- State Champion Overall Belt Buckle
- State Reserve Champion Overall Belt Buckle
- Austin County Champion Belt Buckle
- Gold, Silver, Bronze Class Medals

## WINE CLASSIFICATIONS

- Red Wine-Dry
- Red Wine-Sweet
- White Wine-Dry
- White Wine-Sweet
- Blush/Rose'
- Dessert/Port/Sherry Style
- Native/Mustang/Muscadine Grape
- Fruit/Berry

**\$10 per Entry**  
**Unlimited**  
**number of**  
**entries per**  
**category**

**Free Public**  
**Tastings and**  
**Awards**  
**Immediately**  
**after judging,**  
**approximately**  
**3:30 p.m.**



**Open to 2023**  
**and earlier**  
**Vintages.**  
**Repeat entries**  
**are not eligible.**

**Entry is**  
**minimum of 2,**  
**750 mL**  
**bottles, extra**  
**bottles may**  
**be brought**  
**for tasting**

For a set of complete rules and entry form visit: <https://austin.agrilife.org/wine/>





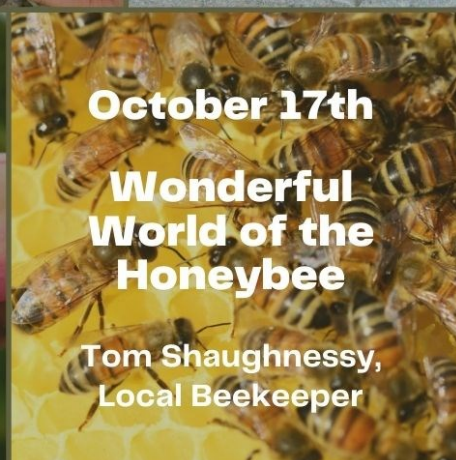
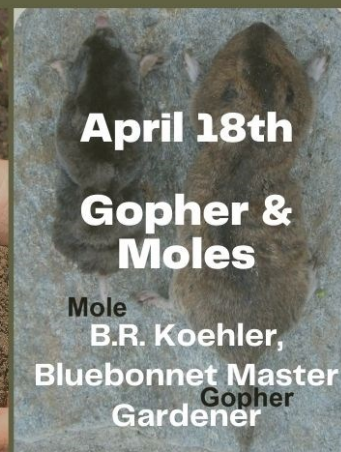
# 2023 AUSTIN COUNTY LUNCH N LEARN SERIES

HOSTED BY: BLUEBONNET MASTER GARDENER ASSOCIATION  
FREE TO THE PUBLIC

AUSTIN COUNTY AGRILIFE OFFICE  
800 E WENDT ST.  
BELLVILLE, TX 77418

BRING YOUR OWN LUNCH  
LIGHT REFRESHMENTS PROVIDED

REGISTRATION: 11:50AM - 12PM  
PROGRAM: 12PM - 1PM



REGISTRATION IS NOT  
REQUIRED BUT IS ENCOURAGED.  
TO REGISTER CALL THE OFFICE  
OR VISIT OUR WEBSITE AT  
[HTTP://AUSTIN.AGRILIFE.ORG](http://austin.agrilife.org)



QUESTIONS PLEASE CALL:  
TEXAS A&M AGRILIFE  
EXTENSION SERVICE OF AUSTIN  
COUNTY AT 979-865-2072

INDIVIDUALS WITH DISABILITIES WHO REQUIRE AN AUXILIARY AID, SERVICE OR ACCOMMODATION IN ORDER TO PARTICIPATE IN THIS ACTIVITY ARE ENCOURAGED TO CONTACT THE EXTENSION OFFICE IN AUSTIN COUNTY AT LEAST EIGHT DAYS PRIOR TO THE PROGRAM FOR ASSISTANCE. THE MEMBERS OF TEXAS A&M AGRILIFE WILL PROVIDE EQUAL OPPORTUNITIES IN PROGRAMS AND ACTIVITIES, EDUCATION, AND EMPLOYMENT TO ALL PERSONS REGARDLESS OF RACE, COLOR, SEX, RELIGION, NATIONAL ORIGIN, AGE, DISABILITY, GENETIC INFORMATION, VETERAN STATUS, SEXUAL ORIENTATION OR GENDER IDENTITY AND WILL STRIVE TO ACHIEVE FULL AND EQUAL EMPLOYMENT OPPORTUNITY THROUGHOUT TEXAS A&M AGRILIFE.



2  
**CEU**  
**(GEN)**

Wildlife Management & Native Grass Restoration  
2023 Multi-County New Landowner Educational Series

October 20, 2023



Colorado County  
Fairgrounds

1146 Crossroads Blvd.  
Columbus, TX 78934

Registration 1:00-1:30 pm

Program 1:30-5:00 pm

\$20/Person/Session

\$125/Person/Series - \$200/Couple/Series

To register online visit:

<https://washington.agrilife.org/nlo>

Topics to be covered:

Wildlife Valuation/Know your TPWD *Biologist*

Native Grass Transition Do's and Don'ts

Native Prairie Work – Local Efforts  
and Resources



For more information please contact:

Stacie Villarreal  
Austin County  
(979) 865-2072  
Austin.AgrLife.org

Laramie Kettler  
Colorado County  
(979) 732-2082  
Colorado.AgrLife.org

Scott Willey  
Fayette County  
(979) 968-5831  
Fayette.AgrLife.org

Kara Matheney  
Washington County  
(979) 277-6212 ext. 2  
Washington.AgrLife.org





# Austin & Colorado County Soil Testing Campaign

## November 1-22, 2023

This campaign is open to all Livestock, Forage, and Row Crop Producers. Soil bags, campaign forms, and directions can be picked up at the Austin or Colorado County Extension Office and select feed stores in each county.

All bags, forms, and payment must be received by November 22nd!

**Please make checks payable to:**

**Austin County:**

**Austin County Beef & Forage Committee**

**Colorado County:**

**Texas AgriLife Extension**



### Prices:

*Routine Analysis: \$8\**

*Routine + Micro-nutrients: \$15\**

*\*Form must be completely fill out out for the discount*

*Please contact your County Extension office for details on picking up and dropping off forms and samples.*

**Austin County Office- 979-865-2072  
800 E Wendt St., Bellville**

### ***Austin County Locations:***

- Extension office
- Bellville Farm & Ranch
- Linseisen's Feed & Supply Inc
- Steinhauser's
- Bernardo Farm & Ranch Supply
- Lindemann's Store

*Other Locations in Colorado County*

Texas A&M AgriLife Extension provides equal opportunities in its programs and employment to all persons, regardless of race, color, sex, religion, national origin, disability, age, genetic information, veteran status, sexual orientation, or gender identity. The Texas A&M University System, U.S. Department of Agriculture, and the County Commissioners Courts of Texas Cooperating.

**TEXAS A&M  
AGRI LIFE  
EXTENSION**



# Private Applicator Licenses Trainings for 2023



Friday, February 10, 2023

Friday, May 5, 2023

Friday, August 4, 2023

Friday, November 3, 2023

*Training is from 1pm to 5pm*

*Check in/Registration starts 15 mins prior*

*\*Date & Time are subject to change\**

## *Prices:*

*Training-\$10*

*Books-\$50*

*(2 manuals)*

**Checks payable to:  
Extension Program  
Council (EPC)**

***Nonrefundable***

***Please RSVP to reserve  
your spot, space is limited***

<http://austin.agrilife.org/event-registrations/>



Texas A&M AgriLife Extension provides equal opportunities in its programs and employment to all persons, regardless of race, color, sex, religion, national origin, disability, age, genetic information, veteran status, sexual orientation, or gender identity. The Texas A&M University System, U.S. Department of Agriculture, and the County Commissioners Courts of Texas Cooperating.

Training will be conducted at  
Texas A&M AgriLife Extension Service of  
Austin County located at  
800 E Wendt St., Bellville, TX 77418

The purpose of this training is to obtain a Private Applicator License from Texas Department of Agriculture (TDA). This license will enable the applicator to purchase and apply state limited use and federally restricted chemicals on his land or land he has control of for the purpose of production of agricultural commodities. All farm and ranch operators who do not have a Private Applicator's License to purchase "restricted use" pesticides (such as 2, 4-D, Grazon P+D, Tordon 22K, etc.) will need to attend this training.

If you are interested in obtaining a Private Applicator License Training and need a different date, please contact the Austin County Extension office at (979) 865-2072 to purchase the manuals.

TEXAS A&M  
**AGRI LIFE**  
EXTENSION



# Austin County Pecan Show

*Sponsored by: The Horticulture Committee of Austin County*

**Entry Deadline: Monday, November 27, 2023, 4pm**

**Texas A&M AgriLife Extension Service of Austin County  
800 E Wendt St., Bellville, TX**

## **Guidelines:**

- Entries must be delivered to the Extension Office during normal business hours (8am-12pm & 1pm-5pm) starting November 1st
- All entries must be submitted by 4pm on Monday, November 27th.  
**No Late Entries Accepted!**
- Each entry should have 50 uncracked pecans of the same variety, from the same tree
- Each entry **MUST** be in a brown paper bag labeled with entrant's name and entry form
  - *Entry forms and bags can be picked up at the Extension office or forms printed off website ([austin.agrilife.org](https://austin.agrilife.org)).*
- Entries are limited to one entry of each named variety per person
- Pecans must be from 2023 Crop
- No entry fee, Open to all Ages

*\*All entries become property of the Austin County Horticulture Committee\**

***Results will be available at the Pecan Program on 11/30/2023***

For more information please visit the Austin County Extension Office website:

<https://austin.agrilife.org/agriculture/ac-pecan-show/> or contact the office, 979-865-2072





# Pecan Program & Pecan Show Awards

*Sponsored by: Horticulture Committee of Austin County*

**Thursday, November 30, 2023**

**Texas A&M AgriLife Extension Service, Austin County**  
**800 E Wendt St., Bellville, TX**

Registration: 5:30pm

Program: 6pm-8pm

Awards: Following Program

**FREE TO THE PUBLIC,**  
Dinner provided

## Topics/Speaker:

- Processing Pecans: From Field to Plate
- Storage of Pecans
  - Monte Nesbitt, PhD, Agrilife Extension Horticulture Program Specialist
- Awards Program

Please RSVP by: November 28th

For more information please visit the Austin County Extension Office website: [austin.agrilife.org](http://austin.agrilife.org) or contact the office: 979-865-2072



Texas A&M AgriLife Extension provides equal opportunities in its programs and employment to all persons, regardless of race, color, sex, religion, national origin, disability, age, genetic information, veteran status, sexual orientation, or gender identity. The Texas A&M University System, U.S. Department of Agriculture, and the County Commissioners Courts of Texas Cooperating.





# Austin County Feral Hog Bounty Program

*Sponsored by: Austin County Commissioners Court*

## Austin County Bounty Program:

Subject to fund availability, participants will be awarded \$5 per feral hog harvested in Austin County. Biological evidence **MUST** be provided of harvest in form of a pair of feral hog ears. Each pair must be placed in an individually sealed bag and dropped off to 1 of the 3 drop off locations.



*Only 20 pairs  
per household  
per month*

**\$5/pair  
of ears**

## Drop Off Locations:

- ***Steinhauser's (Sealy location ONLY)***
- ***Linseisen's Feed & Supply (Bellville)***
- ***Lindemann Store (Industry)***

*Feral hogs can be harvested until funds are depleted. All feral hog **MUST** be harvested in Austin County.*



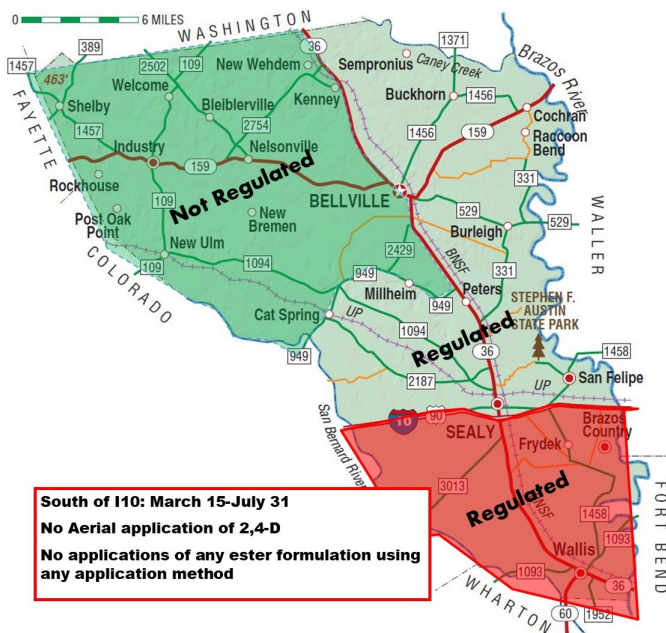


## SPRAY PERMITS REQUIRED FOR A PORTION OF AUSTIN COUNTY

As a reminder to anyone that will be using state limited use or state restricted use herbicides in Austin County, a permit to apply these herbicides must be obtained through the Texas Department of Agriculture if you plan on spraying in certain portions of the county. The following areas of Austin County must acquire a permit as is specified in the Texas Agricultural code, chapter 75,

- 1) Only that portion of Austin County lying east and south of the line beginning at the point where State Highway 36 crosses the north county line, thence southerly along Highway 36 to FM 949; thence westwardly along FM 949 to the San Bernard River is regulated by the Act, Subchapter G and regulations adopted thereunder.
- 2) Between March 15 and July 31, in that portion of Austin County lying south of Interstate Highway 10, the following restrictions on the use of 2,4-D formulations shall apply:
  - (A) the application by aircraft is prohibited
  - (B) the use of all ester formulations by any method is prohibited.

Permits may be obtained from the Texas AgriLife Extension Service of Austin County at (979) 865-2072. Forms can also be



REGISTERING FOR A COUNTY PROGRAM?

[CLICK HERE](#)

Please feel free to contact me if you have any questions.

Sincerely,

**Stacie M. Villarreal**

Texas A&M AgriLife Extension Service

County Extension Agent- Agriculture & Natural Resources - Austin County

1 East Main, Bellville, TX 77418 (Mailing Address)

800 E Wendt St, Bellville, TX 77418 (Physical Address)

Phone: 979-865-2072

[stacie.villarreal@ag.tamu.edu](mailto:stacie.villarreal@ag.tamu.edu)

[Austin.agrilife.org](http://Austin.agrilife.org)

Educational programs of the Texas A&M AgriLife Extension Service are open to all people without regard to race, color, religion, sex, national origin, age, disability, genetic information, or veteran status. The Texas A&M University System, U.S. Department of Agriculture, and the County Commissioners Courts of Texas Cooperating. Individuals with disabilities who require an auxiliary aid, service or accommodation in order to participate in this meeting are encouraged to contact the County Extension Office at (979) 865-2072 ten (10) days prior to the meeting to determine how reasonable accommodations can be made.