

Tent Caterpillars

I have received lots of phone calls about the infestations of worms in trees. Here's the information everyone is looking for! Don't panic - the population should be starting to decrease soon and will be sparse at most in a few weeks.

Forest tent caterpillars are one of the most widespread and abundant of the tent-making caterpillars. Like their close cousins the eastern tent caterpillars, forest tent caterpillars feed primarily on trees; but unlike their cousins, and the common fall webworm, the forest tent caterpillar doesn't make an actual tent. Instead the caterpillars aggregate between feedings on a silken mat which they spin on some area of the trunk or on large branches of the host tree.

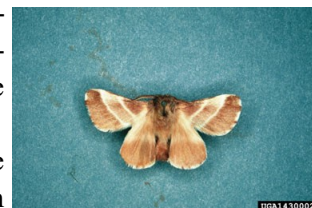
Forest tent caterpillars are relatively easy to recognize. Besides their distinctive aggregation behavior, caterpillars can be recognized by their dark-gray to brownish body color, with pale-blue and yellow lines extending along each side, and a chain of distinct whitish shoe-print-shaped spots running down the middle of their back. After completing their immature development in two or three weeks, they pupate and eventually turn into a brown moth.

Forest tent caterpillars appear once a year, usually in spring, sometimes in very large numbers. Then they "disappear" for a whole year until the cycle begins again. Some years caterpillar numbers are very high, but most years they may be noticed only by the sharpest-eyed observers. The cycles of up and down appear to be driven by a combination of environmental and natural control factors, like birds and parasitic insects. This may be one of those abundant years, similar to last year.

If your favorite tree has a case of these leaf feeding caterpillars, there is probably little reason for concern. Most trees can easily withstand 20% loss of foliage with no harm, and in most residential locations most infestations will likely not have a major impact on tree foliage. In the event of heavier infestations, even when trees are completely defoliated, deciduous trees usually re-leaf and recover quickly. However when other stressors are present (e.g., drought, disease, physical damage to the tree from construction, etc.) and there is heavy defoliation, trees may experience slowed growth or dieback of parts of the tree.

If you notice trees with lots of caterpillars you may be able to protect at least some of the foliage by treating with insecticide applied through a hose-end sprayer. Spinosad and bacillus thuringiensis are two low-impact insecticide ingredients that are effective against caterpillars. Even better, if you can see and have access to the large resting mats of caterpillars on the trunk, simply spot treat the caterpillar aggregation with a spray bottle using insecticidal soap, horticultural oil, or any pyrethroid insecticide. Such applications, being very targeted, will control the caterpillars with little impact on other beneficial insects.

For lighter infestations, let the caterpillars be, and the birds will have their way with them.



Mark Your Calendars for Upcoming Events

- **April 7th: Austin County Extension Office — CLOSED for Good Friday**
- April 8th: Bluebonnet Master Gardeners Annual Plant Sale — Sealy, 9 am
- April 18th: Lunch-n-Learn Series— Gophers & Moles — Austin County Extension Office, Bellville, 11:50 am
- April 21st: New Landowner – Weed & Brush Management — Immaculate Conception German Catholic Church Parish Hall, Industry, 1:00 pm
- April 22nd: Women in Agriculture Ranch Tour & Workshop — Wharton County Fairgrounds, Wharton, 9:00 am
- May 5th: Private Applicator Training — Austin County Extension Office, Bellville, 1:00 pm
- May 9th: Mill Creek Watershed Program — Austin County Extension Office, Bellville, TBA
- May 16th Lunch-n-Learn Series – Orchids — Austin County Extension Office, Bellville, 11:50 am
- May 19th: New Landowner – Forage & Livestock Production — Fayette County, 1:00 pm
- **May 29th Austin County Extension Office — CLOSED for Memorial Day**
- August 4th: Private Applicator Training — Austin County Extension Office, Bellville, 1:00 pm

Multi-County New Landowners Series 2023

The Multi-County New Landowner Education program is a series of eight informational meetings/seminars/field days designed to make new landowners in Austin, Colorado, Fayette, & Washington Counties aware of what types of agricultural enterprises are best for their property. Participants in the program will hear from experts in various fields of agriculture concerning the best management practices that they can implement on their own property. This innovative program assists new landowners in understanding the concepts of rural living. Participants in the program are given exposure to ideas on raising livestock and horses, plant identification, fence building, applying pesticides, soil testing, stock pond management, pond construction, fruit and nut production, and much more. The program also serves as a way for new residents of the four counties to network and meet new people in their communities, find out what can be done on their land, what operations can be profitable, and possibly what opportunities they have to serve the community.

Programs will be held on the third Friday of the months of February through May and August through November. Each month's meeting will be held at a different location in one of the four participating counties. The meetings will begin at 1:30 p.m. with registration and last until 5p.m. The cost for the program series is \$125.00 per person, \$200.00 per couple for all eight meetings, or \$20.00 per person per meeting. Continuing Education Units (CEUs) for pesticide applicators will be offered as they are applicable. A great selection of refreshments will be provided at each session. Participants who sign up for the entire series will receive a notebook at the beginning of the series to fill with handouts and reference material that will be useful as they move forward with improvements on their property.

- **April 21st** – Weed & Brush Control
- **May 19th** – Forage &/or Livestock Production – Options for Small Acreage Operations
- **August 18th** – Bees and Trees for Homeowners
- **September 15th** – Horticulture Production – Fruit Trees, Pecans, and Grapes for Landowners
- **October 20th** – Wildlife Management and Native Prairie Restoration
- **November 17th** – Emerging Issues

April Program – Weed & Brush Management – Immaculate Conception Catholic Church-Parish Hall

The April meeting for the 2023 series will take place on Friday, April 21, 2023, at the Immaculate Conception German Catholic Church-Parish Hall located at 15994 TX-159 in Industry. The goal of this session is to help landowners identify common weeds and brush species in our area. In addition to identifying problem species, we will cover the ins and outs of why we have certain the weeds and how to determine the most effective treatment options. We will also be covering a variety of herbicides and application methods for management and control of these plants. This is a great opportunity to network with other new landowners and learn about resources that can be of great assistance to you in establishing and/or managing a pond for your property. Also, if you have a weed you would like identified, please bring it and we will be glad to identify it for you. Any plant sample needs to be as fresh as possible and include leaves, roots, and flowers (if applicable). Three CEUs (2 Gen, 1 IPM) will be available for licensed pesticide applicators. Don't miss this wonderful opportunity!

See Flier on Page 8

AUSTIN COUNTY HOG BOUNTY

Austin County Commissioners Court is offering a bounty on feral hogs. Participants will be awarded \$5 per feral hog harvested in Austin County, with biological evidence provided of harvest in the form of a pair of feral hog ears. Each pair must be placed in an individually sealed bag and dropped off at 1 of the 3 drop off locations. Three local feed stores in the county - Steinhauer's in Sealy, Linseisen's Feed & Supply in Bellville, and Lindemann Store in Industry, will serve as the drop off locations.

A limit of 20 pairs per household per month is allowed. All feral hogs must be harvested in Austin County & signed paperwork must be filled out completely to collect the bounty.

See Flier on Page 11

Spring Fishpond Management

Fertilization provides planktonic algae with nutrients for growth, much the same as fertilizing hay pastures increases grass yields. Proper fertilization increases available food throughout the food chain, thus increasing the number of fish that a pond can support.

Fertilization, however, will not stimulate a good algae bloom if the total alkalinity of the water is below 20 ppm. In Austin County, check the alkalinity of the pond first and if alkalinity is below 20 ppm, add agricultural limestone to neutralize acidity in the soils. Do not use quick or slaked lime as these will cause a rapid pH change that may kill fish. The amount of lime necessary depends on the pH of the soil in the pond bottom. A soil sample should be analyzed to determine the amount of lime to add. Take soil samples from many places in the pond. Combine these samples and spread them out to dry. After samples are dry, mix them together thoroughly and submit one sample for analysis. Send this sample to the Texas A&M University Soil Testing Lab in a test bag (available from your county Extension office). Mark the sample "fishpond" so that the proper tests can be run. The analysis will recommend the proper liming rate. Lime must be applied evenly over the entire pond so that it can react with the bottom mud. If the pond is full, the lime will have to be shoveled or washed into the pond from a boat to distribute evenly.

Lime slowly dissolves into the pond water and is washed out with overflow water. This means that ponds usually need to be re-limed every 2 to 4 years. Many pond managers find it practical to increase the liming rate by one and a half or two times the amount recommended. This increases the length of time between lime applications. Some managers reapply half the recommended lime every 2 years to maintain alkalinity. Adding more than the recommended lime (agricultural lime only) will not harm the pond. A typical liming rate in Austin County is approximately 2 tons per surface acre of pond. **Remember, if a pond needs lime, it will not respond well to fertilizer.**

Fertilizing ponds will increase fish production two-to-threefold. Infertile ponds will seldom produce more than 50 to 100 pounds of fish per acre. Well-managed, fertile ponds can maintain 300 to 400 pounds of fish per acre. If, however, the pond is naturally fertile and is not going to receive much fishing pressure, it may not require fertilizer. If the pond receives only minor fishing (or harvest) pressure, do not fertilize, or fertilize at only half the recommended rate. Once fertilization is started it should be continued. If fertilization is stopped the fish will be stunted because of the reduced food supply. This makes them more susceptible to disease.

Not all fertilizers work well in ponds. Phosphorus is the nutrient most needed in ponds. Given time, the phosphorus will be absorbed and trapped in the mud of the pond through chemical processes. Once trapped, it is not available to planktonic algae but can promote the growth of weeds and filamentous algae. Nitrogen is seldom needed in older ponds. Occasionally, new ponds need nitrogen, but once a pond is established nitrogen usually is over abundant.

Fertilizers are labeled with N-P-K ratios or percents of nitrogen (N), phosphorus (P₂O₅), and potassium (K₂O). The equivalent of 8 pounds of granular-4 pounds of liquid-phosphorous per acre per application is commonly recommended. Liquid fertilizers can be easier to apply and may produce blooms quicker than granular fertilizers. Table 1 lists recommended rates for commonly available fertilizers.

Table 1. Recommended Fertilization Rates for Ponds.-Fertilizer formulation

<i>Granular</i>	<i>Amount/acre/application</i>	<i>Liquid</i>	<i>Amount/acre/application</i>
<i>20-20-5</i>	<i>at 40 lbs./ac</i>	<i>13-38-0</i>	<i>1 gal</i>
<i>16-20-5</i>	<i>at 40 lbs./ac</i>	<i>10-34-0</i>	<i>1 gal</i>
<i>18-46-0</i>	<i>at 18 lbs./ac</i>		
<i>0-46-0</i>	<i>at 18 lbs./ac</i>		

A simple method of knowing when to fertilize is based on water clarity. The depth that light can penetrate into the pond is a measure of the algal density or bloom. Light penetration can be measured using a Secchi disk. A Secchi disk can be made from an 8-inch diameter disk of plywood, metal, or plastic. Mark the disk into quarters and paint the two opposite quarters white and black, respectively. Attach the disk to a yardstick or to a pole marked at 12, 18 and 24 inches from the disk.

The optimum algae bloom is one that allows light to penetrate to a depth of 18 to 24 inches. Submerge the Secchi

to page 4

Spring Fishpond Management

from page 3

into the pond until it just disappears and note that depth. If the Secchi disk disappears between 18 and 24 inches there is no need to fertilize. It is time to fertilize again if the disk visibility is increasing rapidly toward 24 inches or if the disk is visible past 24 inches. If the disk disappears between 12 and 18 inches, the bloom is too dense; do not fertilize and watch the pond closely. If the disk disappears in less than 12 inches, the bloom is very dense, and a severe oxygen depletion could occur. Remember, do not consider low Secchi readings that are the result of muddiness rather than algae.

A Secchi disk reading of 12 inches or less means the pond is too rich in nutrients. At that point you need to determine where excess nutrients are coming from. **Have you over-fertilized? Are livestock manures or crop fertilizers entering the pond? If you are feeding the fish, are you overfeeding?** Try to discover the source of the problem. Dense blooms can consume most of the pond's oxygen at night. Be prepared to aerate at night if the visibility is low and there are consecutive days of cloudy weather.

Granular fertilizers should not be broadcast into the pond. Granules will sink to the bottom and the phosphate will be absorbed directly into the mud and lost. Granules should be placed on a platform or in a permeable sack that is submerged about 12 inches underwater.

Liquid fertilizers are dense and must be diluted with water before applying them or they will sink to the bottom and be absorbed into the mud. Dilute liquid fertilizers about 10 to 1 (water to fertilizer) and spray, splash or mix them into the pond. Apply fertilizer mixture as evenly as possible over the pond surface. Fertilization should begin in early spring. **This first fertilizer application does not always stimulate a bloom.** Continue to fertilize at 2- to 3-week intervals until the pond blooms green. Once a bloom is established, fertilize as necessary to maintain it and use the Secchi disk to help make fertilization decisions. One important word of caution: **Do not fertilize ponds that are infested with aquatic weeds. The fertilizer will only stimulate growth of the weeds. Control weeds before fertilizing.** Establishing a good fertilization program before weeds appear is one of the best methods of weed prevention. Hopefully with more normal rainfall this year, your ponds will be more robust, healthy, and ready for you and your families to fish and to enjoy!

Private Application Training for 2023

If you plan on using a state limited use or state restricted use pesticide, such as Grazon P+D, 2 4-D, Weedmaster, etc., and need a license, the Texas A&M AgriLife Extension Service of Austin County will be hosting several Private Applicator Training classes during 2023 at the Austin County Extension Office, 800 E Wendt St., Bellville. Books and study materials for the course may be purchased ahead of time at the Extension Office for \$50.00. A registration fee of \$10.00 will be charged for the training. The registration fee will include the training and additional study materials. The training will begin at 1pm and conclude about 5pm, available on the following days:

- Friday, May 5, 2023
- Friday, August 4, 2023
- Friday, November 3, 2023

The Texas Department of Agriculture, who oversees the testing and administration of Applicator Licensing, has contracted with PSI Services to administer the exam for agricultural pesticide applicator licensing. Applicants will coordinate testing with PSI at one of their 22 locations around Texas. Details on the process, locations, cost, and other pertinent information will be provided at the training to help applicants complete the licensing process. Once applicants have completed the training and passed the exam with a score of 70 or above, they will be eligible to apply for the Private Applicator License, allowing for the purchase of all state limited use and restricted use pesticides used in agriculture.

Important: If an applicant has any questions about licensing or exam categories, please contact TDA at 800-835-5832 or 512-463-7622 or Texas Department of Agriculture – Agriculture Pesticide Program, P.O. Box 12847, Austin, TX 78711.

See Flier on Page 10

Lunch-N-Learn Series 2023

Bluebonnet Master Gardeners of Austin County are pleased to present the 2023 “Lunch-N-Learn” series which will be hosted on the third Tuesday of each month from January-May and September-October. The overall series will feature topics related to horticulture with homeowner and backyard gardeners in mind! Speakers are experts in their fields and practical gardeners with great tips and information for everyone.

Programs are held in-person at the Texas A&M AgriLife Extension Office of Austin County located at 800 E. Wendt Street in Bellville. Program registration will begin at 11:50 am with the program beginning promptly at 12:00 pm and concluding by 12:55 pm. At the conclusion of each session, the speaker and our Austin County Master Gardeners will be available to help answer gardening questions.

All Master Gardener Lunch-N-Learn programs are FREE and OPEN to the public and you are welcome to bring your own lunch and drink. We will have a few refreshments available as well. Registration is not required but is encouraged.

Remaining series dates and topics are as follows:

- Tuesday, April 18th - Gophers & Moles by B R Koehler
- Tuesday, May 16th - Orchids
- Tuesday, September 19th - Plumerias by Faye Beery
- Tuesday, October 17th - Wonderful World of the Honeybee

See Flier on Page 7

BMGA Plant Sale

The Bluebonnet Master Gardener Association hosts its Annual Plant Sale on April 8th, from 9:00 am until 5:00 pm or when sold out. This year's plant sale will be held at the Sealy Historical Park, 211 East Main Street, Sealy.

A wide variety of plants will be available for purchase including Easter lilies, colorful flowers for Easter, roses, “Texas Superstar” plants, “Texas Native” plants, succulents, pollinator plants, tomatoes, milkweed plants, herbs, fruit and citrus trees, blueberries, blackberries, and a few surprises – something for everyone. There will also be gardening tools and Magic Worm Compost, as well as some demonstrations on Square Foot Gardening and Rainwater Harvesting, with Texas Superstar experts on site. There will also be a Kids’ Corner where children can plant seeds and microgreens or build mason bee houses.

All plants are locally sourced to ensure they are climatized for this area. There will be many expert Master Gardeners on hand to help you find that special plant and give you instructions for its care. Their knowledge and passion for each plant is sure to inspire.

Proceeds from the sale help Bluebonnet Master Gardeners support the four counties (Austin, Colorado, Fayette, and Washington) with graduating high school senior scholarships each year, community gardens, FREE-to-the-public “Lunch & Learns”, and other local activities.

For more information regarding BMGA, visit: <https://txmg.org/bluebonnet> or find us on Facebook at Bluebonnet Master Gardeners Association.

See Flier on Page 6

AUSTIN COUNTY HAY SHOW RULES & GUIDELINES

Hay Show Rules and Guidelines have now been released! Visit <https://austin.agrilife.org/hay-show/> for a complete list of the Rules, Guidelines and Forms for 2023.

Hay classes for this year's show will be:

- 1) **Improved (Hybrid) Bermudagrass** (*Except T-85*) (e.g., Coastal, Jiggs, Alicia)
- 2) **Other Bermudagrasses** (e.g., Common Bermudagrass, Tifton 85)
- 3) **Warm Season Annual Grasses** (e.g., Rice Straw, Hay Grazer, Sudan Crosses, Sorghum Alum)
- 4) **Other Warm Season Perennial Grasses** (e.g., Eastern Gamagrass, Bluestem, Johnsongrass, Kleingrass, Bahiagrass)
- 5) **Cool Season Grasses** (e.g., Wheat, Oats, Cereal Rye, Ryegrass)
- 6) **Legumes** (e.g., Clover, Peanut, Cowpea)
- 7) **Legume/Grass Mixtures** (e.g., Rye/Clover, Oats/Vetch)
- 8) ***New this year* All Other Mixed Grasses** (e.g., Bermudagrass/Bahia, Bermudagrass/Johnsongrass)

BLUEBONNET MASTER GARDENER ANNUAL PLANT SALE SATURDAY, APRIL 8TH

SALE STARTS AT 9 AM - ENDS AT 5 PM OR SOLD OUT

- KIDS CORNER ACTIVITIES
 - MASON BEE HIVE, PLANTING SEEDS, AND MICROGREENS
- GARDENING TOOLS AND MAGIC WORM CASTINGS FOR SALE
- DEMONSTRATIONS
 - SQUARE FOOT GARDENING, RAINWATER HARVESTING
 - TEXAS SUPERSTAR EXPERTS ON HAND
- FLOWERS, FRUIT TREES, POLLINATOR FRIENDLY PLANTS, CACTUS, HERBS, TOMATOES, MILKWEEDS, SUPERSTAR PLANTS, ROSES, EVERGREENS, ANNUALS, LOTS OF COLOR FOR EASTER, EASTER LILIES, AND SO MUCH MORE!



PROCEEDS GO TO SUPPORT THE 4 COUNTIES (AUSTIN, COLORADO, FAYETTE, AND WASHINGTON) WITH GRADUATING HIGH SCHOOL SENIOR SCHOLARSHIPS EACH YEAR, COMMUNITY GARDENS, FREE-TO-THE-PUBLIC "LUNCH & LEARNS", AND OTHER LOCAL ACTIVITIES.

SEALY HISTORICAL PARK,
211 EAST MAIN STREET, SEALY, TX

FOR QUESTIONS, PLEASE CALL:
TEXAS A&M AGRILIFE EXTENSION SERVICE
OF AUSTIN COUNTY AT 979-865-2072



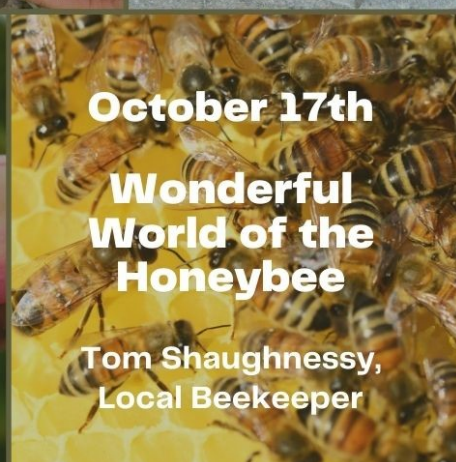
2023 AUSTIN COUNTY LUNCH N LEARN SERIES

HOSTED BY: BLUEBONNET MASTER GARDENER ASSOCIATION
FREE TO THE PUBLIC

AUSTIN COUNTY AGRILIFE OFFICE
800 E WENDT ST.
BELLVILLE, TX 77418

BRING YOUR OWN LUNCH
LIGHT REFRESHMENTS PROVIDED

REGISTRATION: 11:50AM - 12PM
PROGRAM: 12PM - 1PM



REGISTRATION IS NOT
REQUIRED BUT IS ENCOURAGED.
TO REGISTER CALL THE OFFICE
OR VISIT OUR WEBSITE AT
[HTTP://AUSTIN.AGRILIFE.ORG](http://austin.agrilife.org)



QUESTIONS PLEASE CALL:
TEXAS A&M AGRILIFE
EXTENSION SERVICE OF AUSTIN
COUNTY AT 979-865-2072

INDIVIDUALS WITH DISABILITIES WHO REQUIRE AN AUXILIARY AID, SERVICE OR ACCOMMODATION IN ORDER TO PARTICIPATE IN THIS ACTIVITY ARE
ENCOURAGED TO CONTACT THE EXTENSION OFFICE IN AUSTIN COUNTY AT LEAST EIGHT DAYS PRIOR TO THE PROGRAM FOR ASSISTANCE.
THE MEMBERS OF TEXAS A&M AGRILIFE WILL PROVIDE EQUAL OPPORTUNITIES IN PROGRAMS AND ACTIVITIES, EDUCATION, AND EMPLOYMENT TO ALL
PERSONS REGARDLESS OF RACE, COLOR, SEX, RELIGION, NATIONAL ORIGIN, AGE, DISABILITY, GENETIC INFORMATION, VETERAN STATUS, SEXUAL
ORIENTATION OR GENDER IDENTITY AND WILL STRIVE TO ACHIEVE FULL AND EQUAL EMPLOYMENT OPPORTUNITY THROUGHOUT TEXAS A&M AGRILIFE.

**3
CEU**
(2 GEN,
1 IPM)

Weed & Brush Management

TEXAS A&M
AGRI LIFE
EXTENSION

2023 Multi-County New Landowner Educational Series

April 21, 2023

Immaculate Conception German Catholic Church-Parish Hall

15994 TX-159
Industry, TX

Registration 1:00-1:30 pm

Program 1:30-5:00 pm

\$20/Person/Session

\$125/Person/Series - \$200/Couple/Series

To register online visit:

<https://washington.agrilife.org/nlo>

Topics to be covered:

- *Weed & Brush Control Basics*
- *Plant Identification*
- *Plant ID Contest*



If you have a weed you would like identified bring a FRESH sample with you; include leaves, flowers, stem if possible.

For more information please contact:

Stacie Villarreal
Austin County
(979) 865-2072
Austin.Agrilife.org

Laramie Kettler
Colorado County
(979) 732-2082
Colorado.Agrilife.org

Scott Willey
Fayette County
(979) 968-5831
Fayette.Agrilife.org

Kara Matheney
Washington County
(979) 277-6212 ext. 2
Washington.Agrilife.org



The members of Texas A&M AgriLife will provide equal opportunities in programs and activities, education, and employment to all persons regardless of race, color, sex, religion, national origin, age, disability, genetic information, veteran status, sexual orientation, or gender identity and will strive to achieve full and equal employment opportunity throughout Texas A&M AgriLife. The Texas A&M University System, U.S. Department of Agriculture, and the County Commissioners Courts of Texas Cooperating. Individuals with disabilities who require an auxiliary aid, service or accommodation in order to participate in this meeting are encouraged to contact the Austin County Extension Office at (979) 865-2072 prior to the meeting to determine how reasonable accommodations can be made.

Small Farm Outreach Programs

Women in Agriculture Ranch Tour & Workshop

Ranch Tour

9:00 a.m. - 11:00 a.m.

*Tour location and additional
instructions can be found on the
back

- Lunch

- Beef Cattle Clinic

NEW - Youth Workshop

12:00 p.m. - 4:00 p.m.

Wharton County Fairgrounds

6036 FM 961 Rd.

Wharton, TX 77488



Join us for a ranch tour followed by lunch and
a beef cattle clinic!

We'll also have an interactive, youth
workshop for 3rd-12th graders to discuss
agricultural opportunities in 4-H, FFA, and
at the collegiate level.

Youth are allowed to attend the ranch tour.
The youth workshop will run concurrently
with the beef cattle clinic.

J.D. HUDGINS

Topics include:

- Rotational Grazing
- Pasture Management
- Community Based Agricultural Organizations
- Youth Resources: Texas Junior Brahman Association, 4-H, and FFA
- and more!

To register,
CLICK HERE or scan
the QR code



Saturday
April 22, 2023
9:00 a.m. - 4:00 p.m.
*Sign-in & Breakfast: 8:30 a.m.

The program is **FREE**

**Registration is
Required**

Breakfast & Lunch are
included with registration

For additional information, contact: Braxton Mitchell, Wharton/Austin County Extension Agent
(979)532-3310 • bjmitchell@pvamu.edu

The Cooperative Extension Program does not discriminate against anyone regardless of their race, color, national origin, religion, sex, gender identity (including gender expression), sexual orientation, disability, age, marital status, family/parental status, income derived from a public assistance program, political beliefs, reprisal or retaliation for prior civil rights activity, in any program or activity. Persons who require communication in a language other than English or with a disability who require alternative means of communication of program information (braille, large print, audiocassette, etc.) should contact Ms. Belinda Lewis at 936-261-3585 in advance.

Private Applicator Licenses Trainings for 2023



Prices:

Training-\$10

Books-\$50

(2 manuals)

**Checks payable to:
Extension Program
Council (EPC)**

Nonrefundable

***Please RSVP to reserve
your spot, space is limited***

<http://austin.agrilife.org/event-registrations/>



Texas A&M AgriLife Extension provides equal opportunities in its programs and employment to all persons, regardless of race, color, sex, religion, national origin, disability, age, genetic information, veteran status, sexual orientation, or gender identity. The Texas A&M University System, U.S. Department of Agriculture, and the County Commissioners Courts of Texas Cooperating.

Friday, February 10, 2023

Friday, May 5, 2023

Friday, August 4, 2023

Friday, November 3, 2023

Training is from 1pm to 5pm

Check in/Registration starts 15 mins prior

Date & Time are subject to change

Training will be conducted at
Texas A&M AgriLife Extension Service of
Austin County located at
800 E Wendt St., Bellville, TX 77418

The purpose of this training is to obtain a Private Applicator License from Texas Department of Agriculture (TDA). This license will enable the applicator to purchase and apply state limited use and federally restricted chemicals on his land or land he has control of for the purpose of production of agricultural commodities. All farm and ranch operators who do not have a Private Applicator's License to purchase "restricted use" pesticides (such as 2, 4-D, Grazon P+D, Tordon 22K, etc.) will need to attend this training.

If you are interested in obtaining a Private Applicator License Training and need a different date, please contact the Austin County Extension office at (979) 865-2072 to purchase the manuals.

TEXAS A&M
AGRI LIFE
EXTENSION



Austin County Feral Hog Bounty Program

Sponsored by: Austin County Commissioners Court

Austin County Bounty Program:

Subject to fund availability, participants will be awarded \$5 per feral hog harvested in Austin County. Biological evidence **MUST** be provided of harvest in form of a pair of feral hog ears. Each pair must be placed in an individually sealed bag and dropped off to 1 of the 3 drop off locations.



*Only 20 pairs
per household
per month*

**\$5/pair
of ears**

Drop Off Locations:

- ***Steinhauser's (Sealy location ONLY)***
- ***Linseisen's Feed & Supply (Bellville)***
- ***Lindemann Store (Industry)***

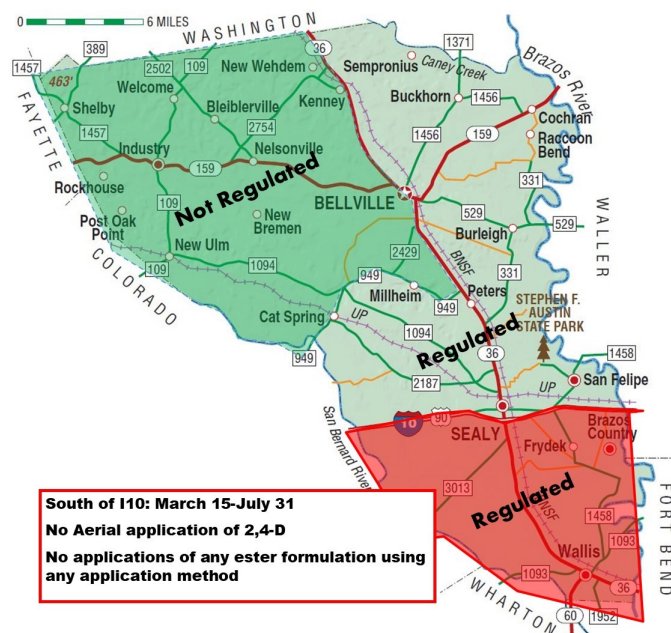
*Feral hogs can be harvested until funds are depleted. All feral hog **MUST** be harvested in Austin County.*



As a reminder to anyone that will be using state limited use or state restricted use herbicides in Austin County, a permit to apply these herbicides must be obtained through the Texas Department of Agriculture if you plan on spraying in certain portions of the county. The following areas of Austin County must acquire a permit as is specified in the Texas Agricultural code, chapter 75,

- 1) Only that portion of Austin County lying east and south of the line beginning at the point where State Highway 36 crosses the north county line, thence southerly along Highway 36 to FM 949; thence westwardly along FM 949 to the San Bernard River is regulated by the Act, Subchapter G and regulations adopted thereunder.
- 2) Between March 15 and July 31, in that portion of Austin County lying south of Interstate Highway 10, the following restrictions on the use of 2,4-D formulations shall apply:
 - (A) the application by aircraft is prohibited
 - (B) the use of all ester formulations by any method is prohibited.

Permits may be obtained from the Texas AgriLife Extension Service of Austin County at (979) 865-2072. Forms can also be



REGISTERING FOR A COUNTY PROGRAM?
[CLICK HERE](#)

REGISTERING FOR A COUNTY PROGRAM?
[CLICK HERE](#)

Please feel free to contact me if you have any questions.

Sincerely,

Steve M. Villan

Stacie M. Villarreal

Texas A&M AgriLife Extension Service

County Extension Agent- Agriculture & Natural Resources - Austin County

1 East Main, Bellville, TX 77418 (*Mailing Address*)

800 E Wendt St, Bellville, TX 77418 (*Physical Address*)

Phone: 979-865-2072

stacie.villarreal@ag.tamu.edu

Austin.agrilife.org

Educational programs of the Texas A&M AgriLife Extension Service are open to all people without regard to race, color, religion, sex, national origin, age, disability, genetic information, or veteran status. The Texas A&M University System, U.S. Department of Agriculture, and the County Commissioners Courts of Texas Cooperating. Individuals with disabilities who require an auxiliary aid, service or accommodation in order to participate in this meeting are encouraged to contact the County Extension Office at (979) 865-2072 ten (10) days prior to the meeting to determine how reasonable accommodations can be made.